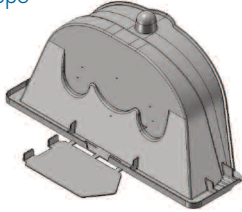


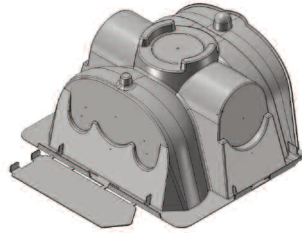
# THE QUICK4<sup>®</sup> PLUS STANDARD LP CHAMBER



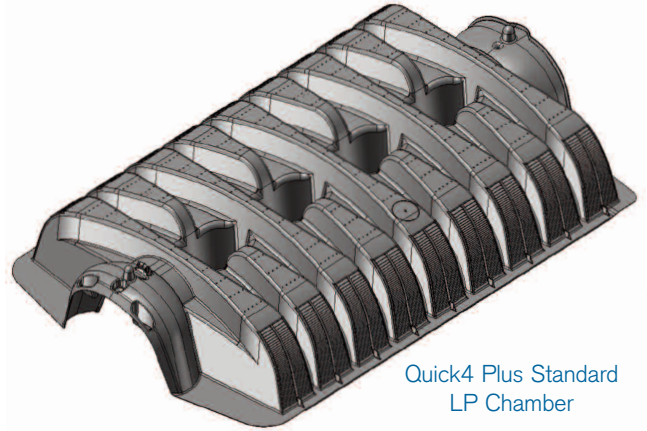
All-in-One Periscope



End Cap



All-in-One End Cap



Quick4 Plus Standard LP Chamber

The Quick4 Plus Standard Low Profile (LP) Chamber offers maximum strength through its center structural column. This chamber can be installed in a 36-inch-wide trench. This chamber is shorter than other standard models allowing for shallower installation. Like the original line of Quick4 chambers, it offers advanced contouring capability with its Contour Swivel Connection™ which permits 10-degree turns, right and left. It is also available in four-foot lengths to provide optimal installation flexibility. The Quick4 Plus All-in-One and the Quick4 Plus End Caps are available with this chamber, providing increased flexibility in system configurations.

## Quick4 Plus Standard LP Chamber

- Low Profile design makes this chamber ideal for shallow applications
- Center structural columns offers superior strength
- Advanced contouring connections
- Latching mechanism allows for quick installation
- Four-foot chamber lengths are easy to handle and install

## Quick4 Plus End Cap

- Simple, flat design
- Allows installation of a pipe from the end only
- Piping drill points are set for gravity or pressure pipe

## Quick4 Plus All-in-One End Cap

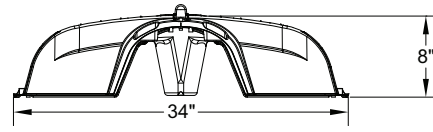
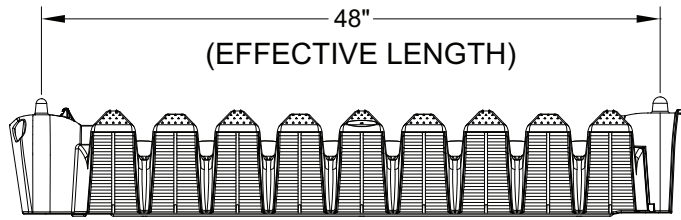
- May be used at the end of chamber row for an inlet or outlet and can be installed mid-trench
- Mid-trench connection feature allows construction of chamber rows with center feed, as an option to inletting at the ends of chamber rows
- Center feed connection allows for easy installation of serial distribution systems
- Pipe connection options include sides, ends or top

## Quick4 Plus All-in-One Periscope

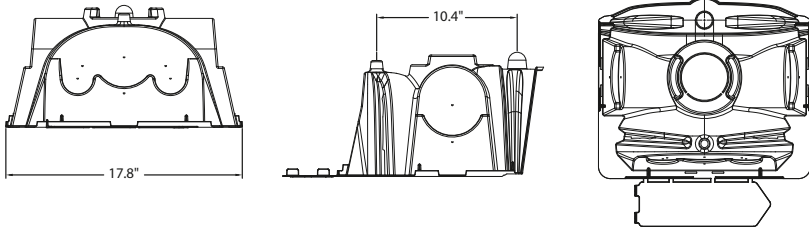
- Allows raised, invert installations
- 180° directional inletting
- Nine inch raised invert great for serial applications

# THE QUICK4 PLUS STANDARD LP CHAMBER

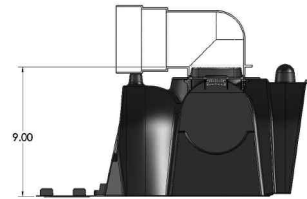
## Quick4 Plus Standard LP Chamber Side and End Views



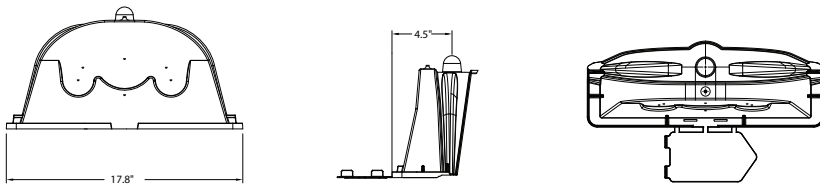
## Quick4 Plus All-in-One End Cap Front, Side and End Views



## Quick4 Plus All-in-One Periscope



## Quick4 Plus End Cap Front, Side and End Views



## Quick4 Plus Standard Chamber Specifications

Size (W x L x H) ..... 34" x 53" x 8" (86 cm x 122 cm x 20 cm)  
Effective Length ..... 48" (122 cm)

Invert Height ..... 0.6", 3.3", 7", 8"  
(1.52 cm, 8.4 cm, 18.5 cm, 22.6 cm)

### INFILTRATOR SYSTEMS, INC. STANDARD LIMITED WARRANTY

(a) The structural integrity of each chamber, end cap and other accessory manufactured by Infiltrator ("Units"), when installed and operated in a leachfield of an onsite septic system in accordance with Infiltrator's instructions, is warranted to the original purchaser ("Holder") against defective materials and workmanship for one year from the date that the septic permit is issued for the septic system containing the Units; provided, however, that if a septic permit is not required by applicable law, the warranty period will begin upon the date that installation of the septic system commences. To exercise its warranty rights, Holder must notify Infiltrator in writing at its Corporate Headquarters in Old Saybrook, Connecticut within fifteen (15) days of the alleged defect. Infiltrator will supply replacement Units for Units determined by Infiltrator to be covered by this Limited Warranty. Infiltrator's liability specifically excludes the cost of removal and/or installation of the Units.

(b) THE LIMITED WARRANTY AND REMEDIES IN SUBPARAGRAPH (a) ARE EXCLUSIVE. THERE ARE NO OTHER WARRANTIES WITH RESPECT TO THE UNITS, INCLUDING NO IMPLIED WARRANTIES OF MERCHANTABILITY OR FITNESS FOR A PARTICULAR PURPOSE

(c) This Limited Warranty shall be void if any part of the chamber system is manufactured by anyone other than Infiltrator. The Limited Warranty does not extend to incidental, consequential, special or indirect damages. Infiltrator shall not be liable for penalties or liquidated damages, including loss of production and profits, labor and materials, overhead costs, or other losses or expenses incurred by the Holder or any third party. Specifically excluded from Limited Warranty coverage are damage to the Units due to ordinary wear and tear, alteration, accident, misuse, abuse or neglect of the Units; the Units being subjected to vehicle traffic or other conditions which are not permitted by the installation instructions; failure to maintain the minimum ground covers set forth in the installation instructions; the placement of improper materials into the system containing the Units; failure of the Units or the septic system due to improper siting or improper sizing, excessive water usage, improper grease disposal, or improper operation; or any other event not caused by Infiltrator. This Limited Warranty shall be void if the Holder fails to comply with all of the terms set forth in this Limited Warranty. Further, in no event shall Infiltrator be responsible for any loss or damage to the Holder, the Units, or any third party resulting from installation or shipment, or from any product liability claims of Holder or any third party. For this Limited Warranty to apply, the Units must be installed in accordance with all site conditions required by state and local codes; all other applicable laws; and Infiltrator's installation instructions.

(d) No representative of Infiltrator has the authority to change or extend this Limited Warranty. No warranty applies to any party other than the original Holder.

The above represents the Standard Limited Warranty offered by Infiltrator. A limited number of states and counties have different warranty requirements. Any purchaser of Units should contact Infiltrator's Corporate Headquarters in Old Saybrook, Connecticut, prior to such purchase, to obtain a copy of the applicable warranty, and should carefully read that warranty prior to the purchase of Units.



**INFILTRATOR®**  
systems inc.

6 Business Park Road • P.O. Box 768  
Old Saybrook, CT 06475  
860.577.7000 • FAX 860.577.7001

**800.221.4436**  
**www.infiltratorsystems.com**

**For technical assistance, installation instructions or customer service, call Infiltrator Systems at 800.221-4436**

U.S. Patents: 4,759,661; 5,017,041; 5,156,488; 5,336,017; 5,401,116; 5,401,459; 5,511,903; 5,716,163; 5,588,778; 5,839,844  
Canadian Patents: 1,329,959; 2,004,564 Other patents pending.

Infiltrator, Equalizer, Quick4 and Quick4 Plus are registered trademarks of Infiltrator Systems Inc. Infiltrator is a registered trademark in France. Infiltrator Systems Inc. is a registered trademark in Mexico. Contour Swivel Connection is a trademark of Infiltrator Systems Inc. © 2009 Infiltrator Systems Inc. Printed in U.S.A.

PLUS010609ISI-0